



Feckenham Road | Headless Cross | Redditch | Worcestershire

£450,000

Feckenham Road Headless Cross | Redditch

A modern 5-bedroom detached house

An imposing 5-bedroom detached house in leafy end of Headless Cross close to popular schools, local shops, post office, café, amenities as well as Morton Stanley Park and Sports Field.

The property briefly comprises: Hall, Lounge with feature fireplace leading to the dining area with access to the rear garden, The Breakfast Kitchen has a breakfast bar, inset sink, integrated oven and hob, dishwasher and storage cupboard.

Onward the utility room has an inset sink and plumbing and space for a washing machine and tumble dryer and accesses the W.C. This then leads to the Study which also has patio doors to the rear garden and the pedestrian access to the double garage.

Upstairs present the spacious master bedroom with fitted wardrobe and shower en-suite, generous sized bedroom 2 also with fitted wardrobe, bedroom 3 is also well proportioned with eaves storage, and single bedrooms 4 and 5, and the family bathroom.

Outside to the front is the paved driveway with off-road parking for up to 3 cars and access to the double garage, whilst to the rear the enclosed garden is on 2 levels offering two patio areas and the upper lawn accessed by the sweeping staircase.

The property benefits from gas central heating to radiators and double glazing.

Tenure: We have been advised by our vendor that the property is **Freehold** (tbc by solicitors).

Council Tax Band: F (tbc by solicitors).



Details

Hall

Lounge

18' 2" x 12' 2" (5.53m x 3.71m)

Dining Area

9' 4" x 9' 3" (2.84m x 2.82m)

Breakfast Kitchen

11' 2" x 10' 8" (3.40m x 3.25m)

Utility

7' 8" x 6' 5" (2.34m x 1.95m)

Study

8' 8" x 8' 6" (2.64m x 2.59m)

Stairs rise to first floor

Master Bedroom

15' 1" x 13' 5" (4.59m x 4.09m)

En-suite

Bedroom 2

13' 7" x 11' 3" (4.14m x 3.43m)

Bedroom 3

14' 2" x 8' 8" (4.31m x 2.64m)

Bedroom 4

1' 7" x 5' 0" (0.48m x 1.52m)

Bedroom 5

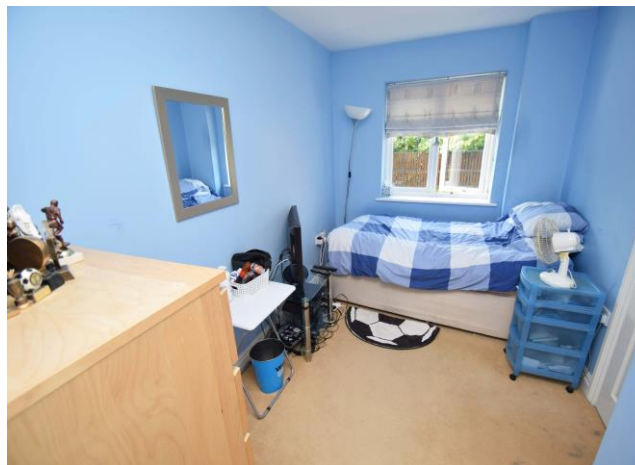
9' 1" x 6' 6" (2.77m x 1.98m)

Bathroom

6' 9" x 6' 7" (2.06m x 2.01m)

Double Garage

16' 10" x 17' 0" (5.11m x 5.11m)



Please Note: These plans are for information only and not to scale.



TOTAL FLOOR AREA: 1775.74 sq. ft. (164.97 sq. m.) approx.

Whilst every attempt has been made to ensure the accuracy of the floorplan contained here, measurements of doors, windows, rooms and any other items are approximate and no responsibility is taken for any error, omission or mis-statement. This plan is for illustrative purposes only and should be used as such by any prospective purchaser. The services, systems and appliances shown have not been tested and no guarantee as to their operability or efficiency can be given.
Made with Metrovox ©2019



Office Opening Times: Monday – Friday (9am – 5:30pm) | Saturday (9am – 4pm) | Sunday & Bank Holidays (Closed)

*No statement in these details is to be relied upon as representation of fact, and purchasers should satisfy themselves by inspection or otherwise as to the accuracy of the statements contained within. These details do not constitute any part of any offer or contract. **AP Morgan** and their employees and agents do not have any authority to give any warranty or representation whatsoever in respect of this property. These details and all statements herein are provided without any responsibility on the part of **AP Morgan** or the vendors. **Equipment:** **AP Morgan** has not tested the equipment or central heating system mentioned in these particulars and the purchasers are advised to satisfy themselves as to the working order and condition. **Measurements:** Great care is taken when measuring, but measurements should not be relied upon for ordering carpets, equipment, etc. The Laws of copyright protect this material. **AP Morgan** is the Owner of the copyright. This property sheet forms part of our database, and is protected by the database right and copyright laws. No unauthorised copying or distribution without permission.*