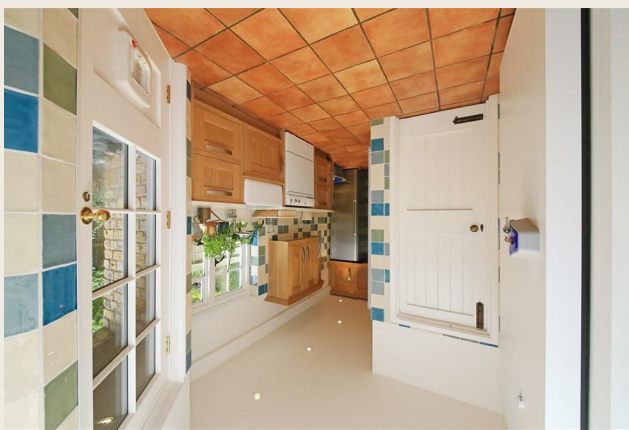
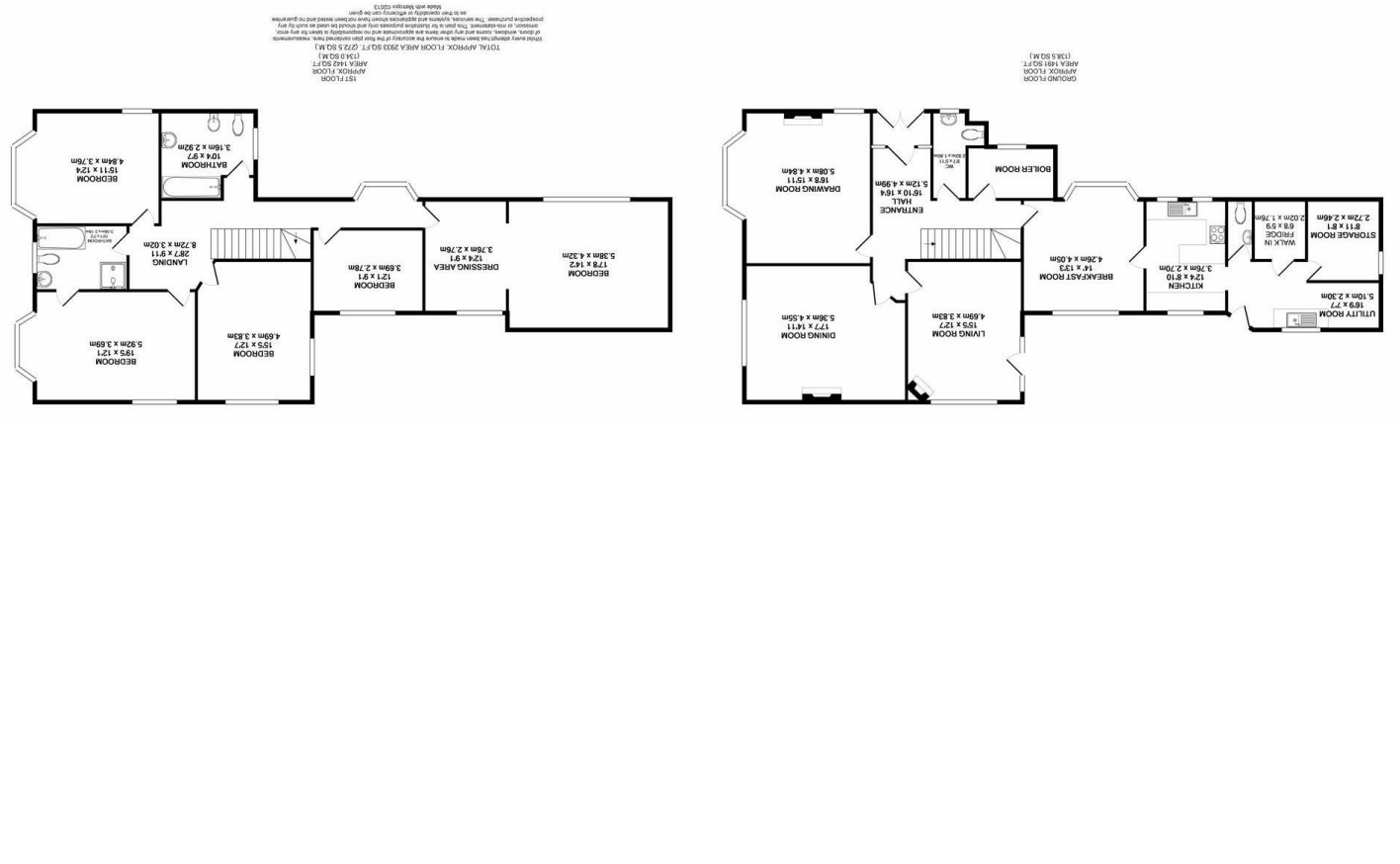


England & Wales	
EU Directive 2002/91/EC	
Very energy efficient - lower running costs	(92 plus) A
	(81-91) B
	(69-80) C
	(55-68) D
	(39-54) E
	(21-38) F
Not energy efficient - higher running costs	(1-20) G
Current	59
Potential	63



LUMLEY ESTATES



Aldenham Grove, Radlett

Tel: 01923 853 366

Email: info@lumleyestates.co.uk



Aldenham Grove
Radlett
Hertfordshire WD7 7BN



This charming newly decorated Edwardian residence is located on a highly sought after private turning in the heart of Radlett. Arranged over two floors and benefitting from many period features, this comfortable family home offers approximately 3000 square feet. To the ground floor is an impressive array of light, spacious rooms including a drawing room, dining room with French doors to the rear garden, living room, breakfast room, utility room and W/C as well as a modern Wilson Fink fitted kitchen with a large walk in fridge and store room as an additional feature. The first floor comprises 5 large double bedrooms (one with en-suite and another with dressing area) and family bathroom. Externally the property boasts secluded and mature rear gardens and ample off street parking. Available now on an unfurnished basis, viewings come highly recommended.

