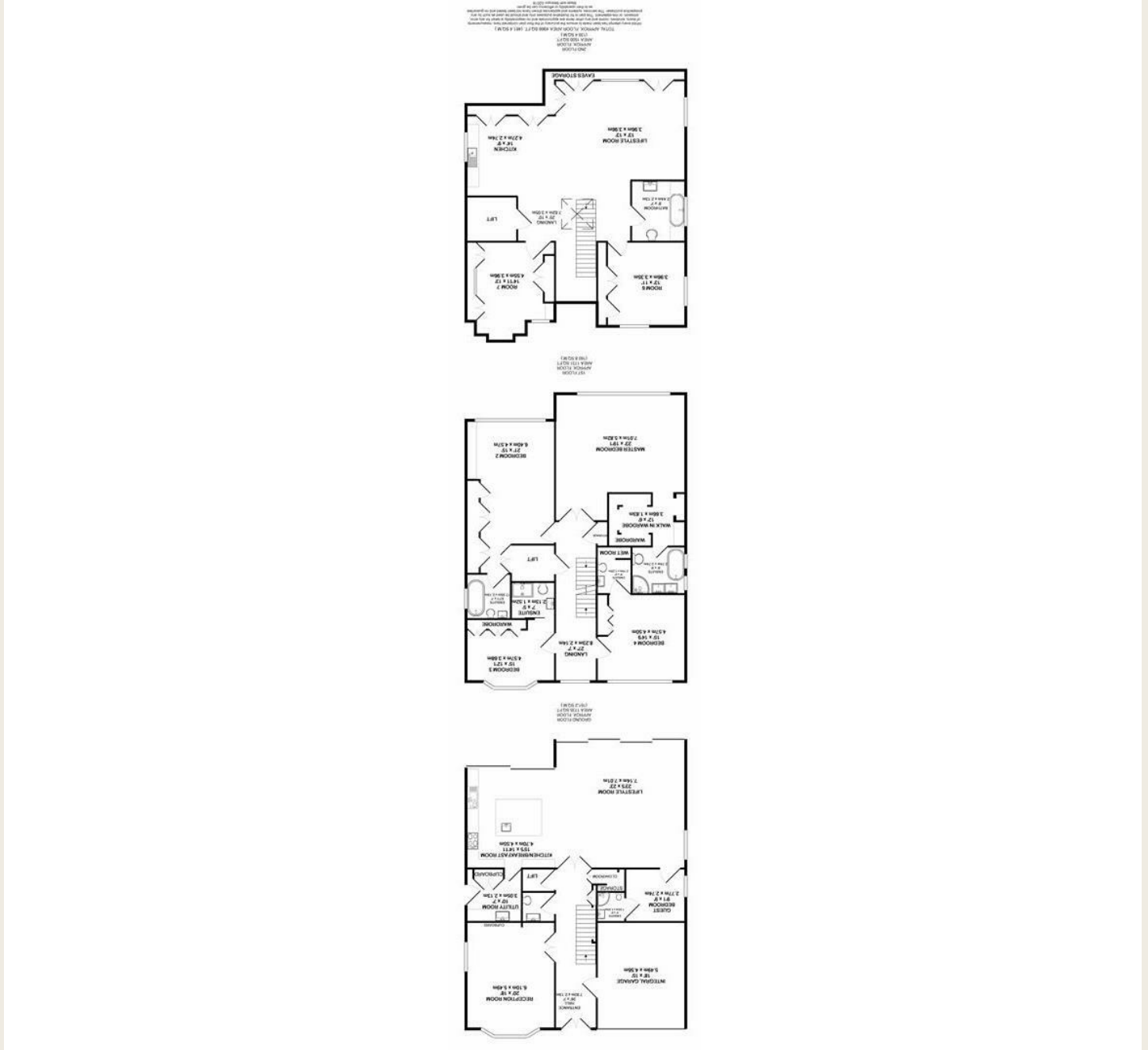
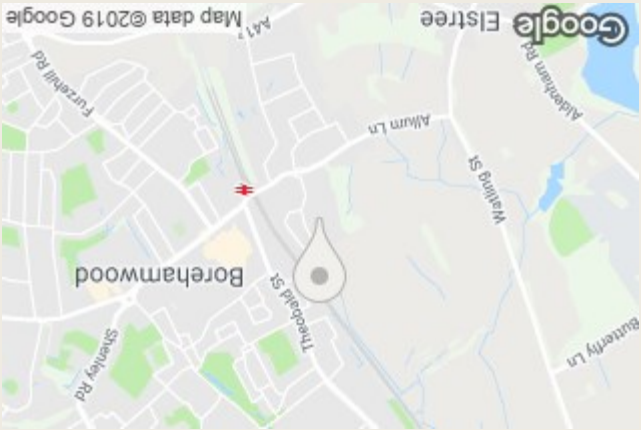


England & Wales	
EU Directive 2002/91/EC	
Very energy efficient - lower running costs	(92 plus) <b>A</b>
	(81-91) <b>B</b>
	(69-80) <b>C</b>
	(55-68) <b>D</b>
	(39-54) <b>E</b>
	(21-38) <b>F</b>
Not energy efficient - higher running costs	(1-20) <b>G</b>
Current	<b>82</b>
Potential	<b>84</b>



**LUMLEY  
ESTATES**



**Orchard Close, Elstree**

**Tel: 01923 853 366**

**Email: info@lumleyestates.co.uk**



**Orchard Close**  
**Elstree**  
**Hertfordshire WD6 3PR**



This stunning newly built seven bedroom modern detached family home situated in a lovely quiet cul-de-sac located off of one of Elstree's Premier Roads. Finished to the highest standard throughout and excellent attention to detail, with Italian tiled flooring, underfloor heating and air conditioning throughout, this amazing property is also in easy reach of all local amenities, schools and Elstree & Borehamwood Station. The ground floor boast a stunning entrance hall, large bright kitchen with Miele and Samsung appliances, open plan dining area with modern fireplace and TV room with sliding doors to the garden, another large main reception set up for cinema and surround sound, large utility room with Samsung washing machine, and dryer, marble guest w/c, hidden large cloakroom, a seventh bedroom with en-suite w/c and shower and direct access to the integral double garage. The whole house is accessible via the glass banister staircase with automated lighting or glass panelled lift. Upstairs on the first floor, the double door leads to the vast master bedroom with its own luxury dressing room and en-suite stunning marble bathroom with egg bathtub, designer matki shower and smart toilet. On this floor you will also find three extremely large double bedrooms all with fitted wardrobes and en-suites shower/bath rooms. A further top floor can be used for a gym or cinema with two additional rooms and a luxury bathroom. With a lovely private rear garden with large patio area and off street parking at the front for around 10 cars, this fabulous house is available on an unfurnished basis with immediate effect. Viewings come highly advised. \*Tenant Admin Fees Apply \*

