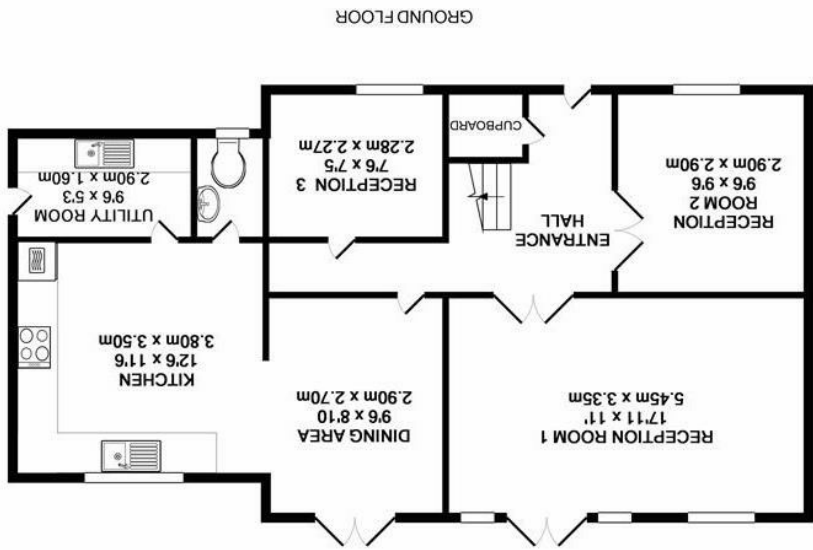
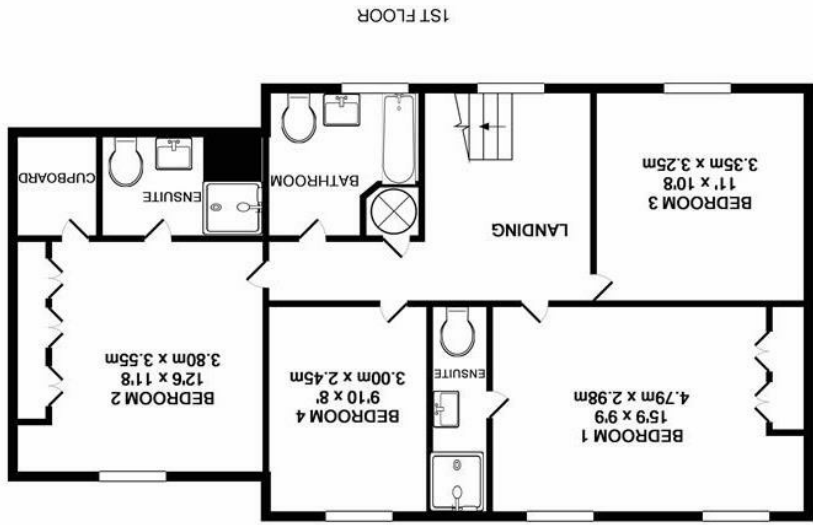


England & Wales	
EU Directive 2002/91/EC	
Very energy efficient - lower running costs	(92 plus) A
	(81-91) B
	(69-80) C
	(55-68) D
	(39-54) E
	(21-38) F
Not energy efficient - higher running costs	(1-20) G
Current	68
Potential	82



TOTAL APPROX. FLOOR AREA 1615 SQ.FT. (150.0 SQ.M.)  
 Whilst every attempt has been made to ensure the accuracy of the floor plan contained here, measurements of doors, windows, rooms and any other items are approximate and no responsibility is taken for any error, omission, or mis-statement. This plan is for illustrative purposes only and should be used as such by any prospective purchaser. The services, systems and appliances shown have not been tested and no guarantee as to their operability or efficiency can be given.  
 Made with Metropix ©2019



LUMLEY ESTATES



Hazel Court, Radlett Freehold

Tel: 01923 853 366  
 Email: info@lumleyestates.co.uk





**Hazel Court**  
**Radlett**  
**Hertfordshire WD7 9LQ**



A wonderful detached family home located in a tucked away location within the heart of the Porters Park Drive development. Close to Shenley's local amenities and just a short drive to Radlett's bustling high street, places of worship and mainline station.

This welcoming family home benefits from over 1,615 Sq.Ft of space and briefly comprises: entrance hall, two good sized reception rooms, large living room, fully-fitted kitchen / dining room both with french doors opening onto the garden and a utility room with side access.

With the upstairs comprising four double bedrooms, with master bedroom and bedroom 2 benefiting from en-suite shower rooms as well as a further family bathroom.

Externally there is a pretty 80ft south west facing rear garden and to the front there is a large driveway with ample off street parking leading to a double garage.

