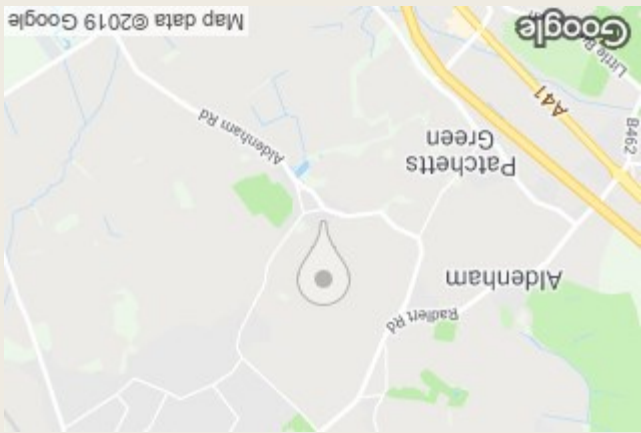


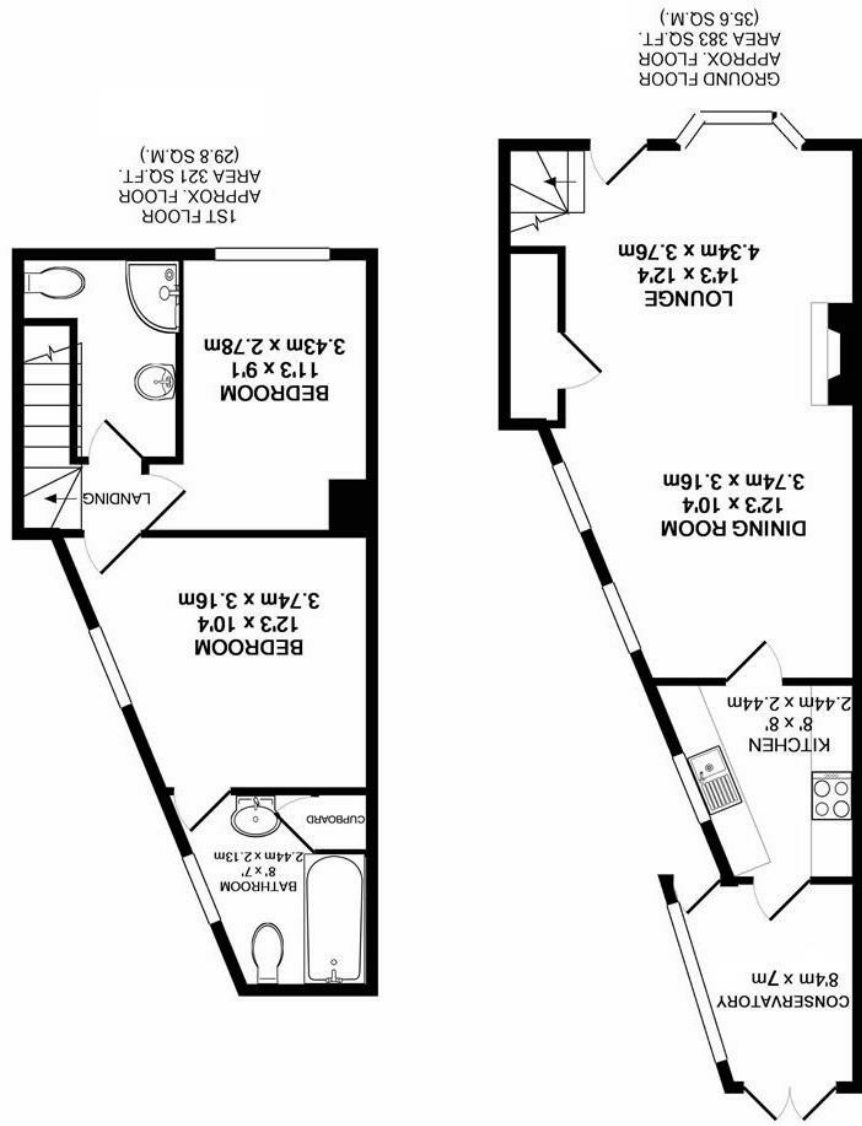
Energy Efficiency Rating	
Potential	Current
(92 plus) A	
(81-91) B	
(69-80) C	
(55-68) D	
(39-54) E	45
(21-38) F	
(1-20) G	56

Very energy efficient - lower running costs
 Not energy efficient - higher running costs

EU Directive 2002/91/EC
 England & Wales



Whilst every attempt has been made to ensure the accuracy of the floor plan contained here, measurements of doors, windows, rooms and any other items are approximate and no responsibility is taken for any error, omission, or mis-statement. This plan is for illustrative purposes only and should be used as such by any prospective purchaser. The services, systems and appliances shown have not been tested and no guarantee as to their operability or efficiency can be given.
 Made with Metropix ©2019



LUMLEY ESTATES



Sunnyside, Letchmore Heath
 Freehold

Tel: 01923 853 366
 Email: info@lumleyestates.co.uk



Sunnyside
Letchmore Heath
Hertfordshire WD25 8ED



This delightful bay fronted period cottage is situated at the end of this most attractive row of terraced Victorian residences. The charming property features two double bedroom and two bathrooms (one en-suite) and the well-presented accommodation offers a blend of traditional features and modern convenience.

Located in the most sought after and quiet hamlet of Letchmore Heath, which boasts stunning rural scenery yet is convenient to the amenities of Radlett which offers a mainline station into London St Pancras, numerous shopping & leisure facilities and the M1, M25 A1, A5 & A41 major road links.

Internally this property benefits from a modern fitted kitchen, lounge/dining room, sun room/utility room, master bedroom with en-suite bathroom, second bedroom and shower room. The property also boasts a quaint courtyard garden.

NO UPPER CHAIN

