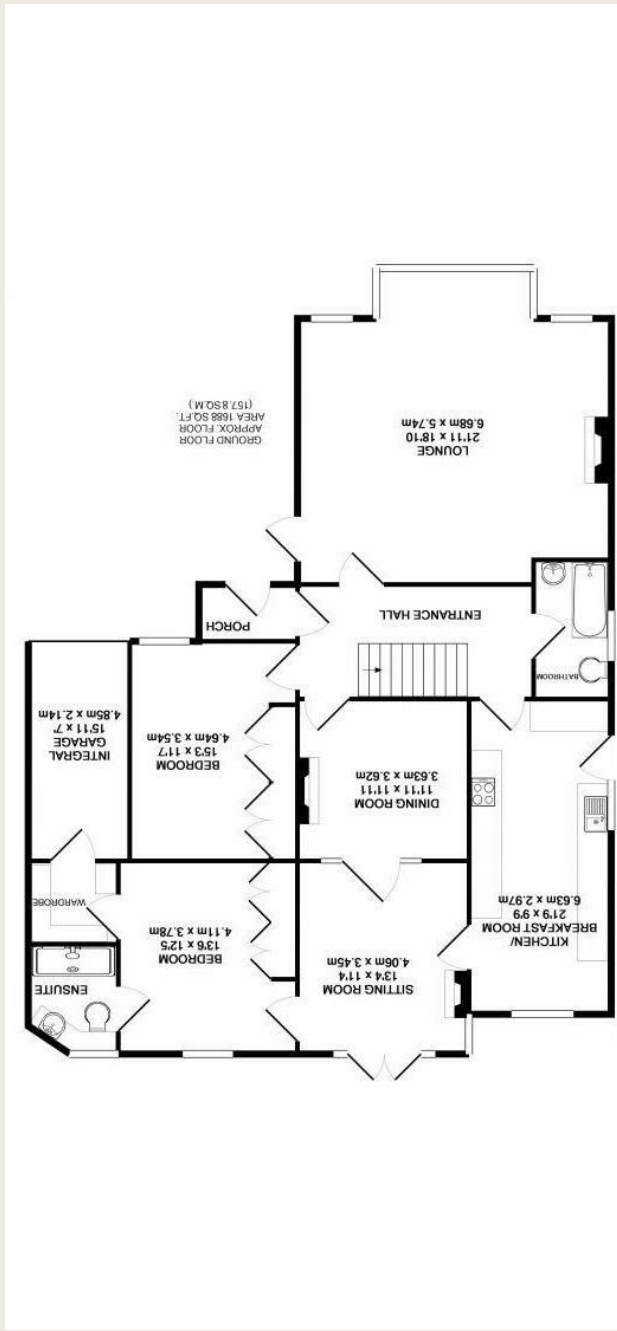
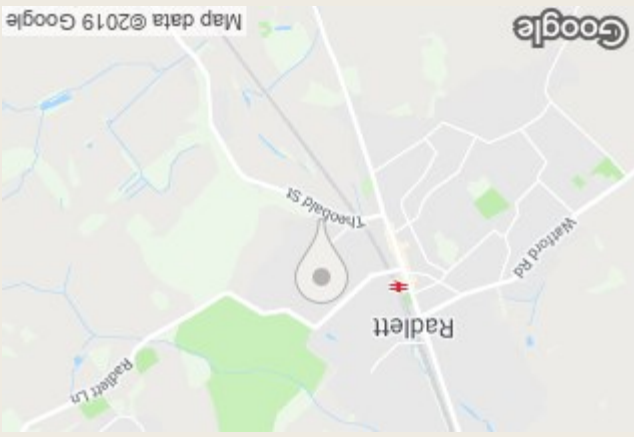
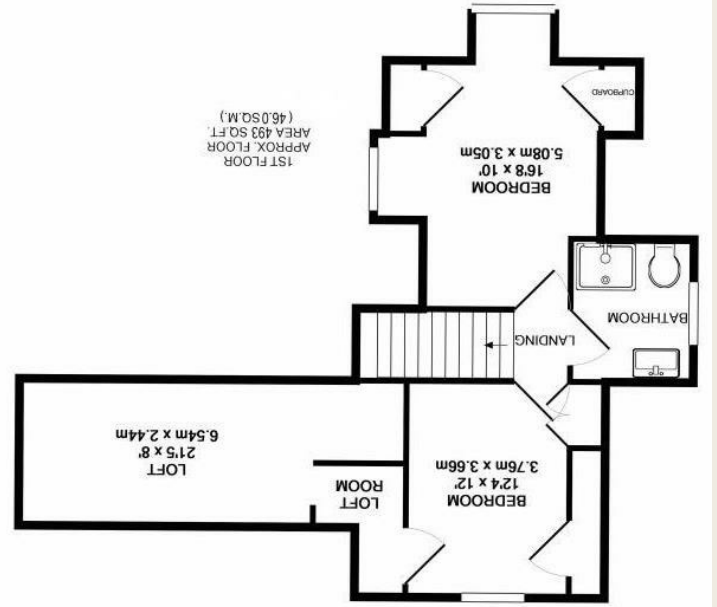


England & Wales	
EU Directive 2002/91/EC	
Very energy efficient - lower running costs	A (92 plus)
	B (81-91)
	C (69-80)
	D (55-68)
	E (39-54)
	F (21-38)
Not energy efficient - higher running costs	G (1-20)
Current	60
Potential	77



What every attempt has been made to ensure the accuracy of the floor plan contained here, measurements of doors, windows, rooms and any other items shown are approximate and no responsibility is taken for any error, omission, or mis-statement. This plan is for illustrative purposes only and should be used as such by any prospective purchaser. The services, systems and appliances shown have not been tested and no guarantee as to their operability or efficiency can be given.  
 Made with Metropix ©2019



**LUMLEY  
ESTATES**



**Theobald Street, Radlett  
Freehold**

**Tel: 01923 853 366  
Email: info@lumleyestates.co.uk**



**Theobald Street**  
**Radlett**  
**Hertfordshire WD7 7LP**



A wonderful semi-detached chalet bungalow set on a good sized plot with a large frontage within easy walking distance of Radlett's high street. Offering over 2,190 Sq.ft and comprises of three reception rooms, a large kitchen/breakfast room, four double bedrooms one with en suite and dressing room and two further bathrooms. Two of the bedrooms and a shower room together with access to a large loft, set on the first floor, which could be reconfigured into additional accommodation if required. Externally there is a carriage driveway which means the property benefits from a large amount of off street parking as well as an integral garage. To the rear is a good sized garden with a large patio.

Located within walking distance of Radlett's Thames Link station with its direct line into London, Kings Cross St.Pancras in under half an hour. The high street has numerous shops, restaurants & deli's along with various places of Worship. Locally placed state and private schools include Newberries primary school, Haberdashers, Radlett Prep and Yavneh College. Viewing is highly recommended.

