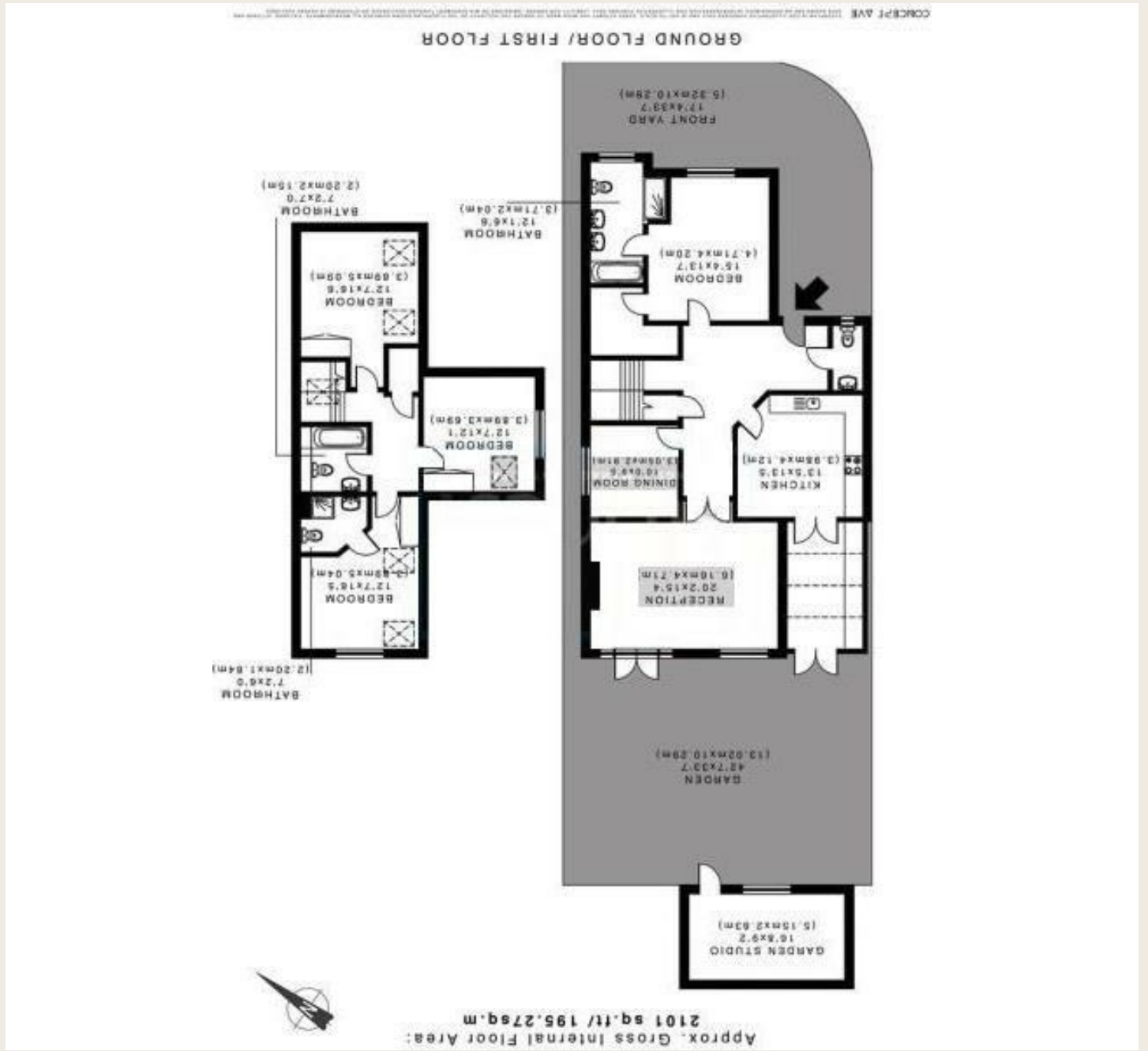


Energy Efficiency Rating	
Potential	Current
Very energy efficient - lower running costs	
A (92 plus)	
B (81-91)	
C (69-80)	
D (55-68)	57
E (39-54)	
F (21-38)	
G (1-20)	
Not energy efficient - higher running costs	
EU Directive 2002/91/EC	
England & Wales	



# LUMLEY ESTATES



Tower View, Bushey

Tel: 01923 853 366

Email: info@lumleyestates.co.uk





**Tower View**  
**Bushey**  
**Hertfordshire WD23 1PT**



This well-presented four double bedroom detached family located in the heart of Bushey Heath within easy reach of local amenities and sought after local schools. Benefitting from a welcoming entrance hall, lovely size bright reception with dual aspect, fitted eat-in kitchen with conservatory style utility room, separate formal dining room and guest w/c to ground floor, which also boasts a fantastic master bedroom with walk-in wardrobe and large modern en-suite bathroom with separate shower cubicle. The first floor benefits from three further double bedrooms, family bathroom and a second en-suite w/c and shower. With a nice size well-maintained rear garden leading to a converted detached garage with is set up as a home office and two allocated secure off street parking spaces set behind gates, this fabulous family home is available on an unfurnished basis from the 1st April '19. An early viewing is highly recommended to avoid disappointment. \* Tenant Fees Apply \*

