



Edward Street, Glynneath, Neath

£78,000

Property Features

- **Three Bedrooms**
- **Combi Boiler**
- **Upvc Windows & Doors**
- **Extended**

Full Description

Alison George are pleased to present for sale this larger than average three bedroom semi-detached property situated in Glynneath near Neath. The property features three reception rooms, kitchen and bathroom to the ground floor with three bedrooms and WC to the first floor. Externally there is a walled garden area to the front of the property and an enclosed lawned garden to the rear with outbuilding and glass-house. Close to all local amenities and benefitting from combi boiler and recently installed Upvc windows and doors the property represents an ideal investment project or first time buy.

LIVING ROOM

12' 4" x 10' 10" (3.76m x 3.3m)

Upvc window to rear, though to dining room.

SITTING ROOM

12' x 9' 6" (3.66m x 2.9m)

Upvc window to front.

DINING ROOM

13' 8" x 8' 6" (4.17m x 2.59m)

Upvc window overlooking the rear, Upvc door to garden, through to kitchen.

KITCHEN

8' 9" x 8' 2" (2.67m x 2.49m)

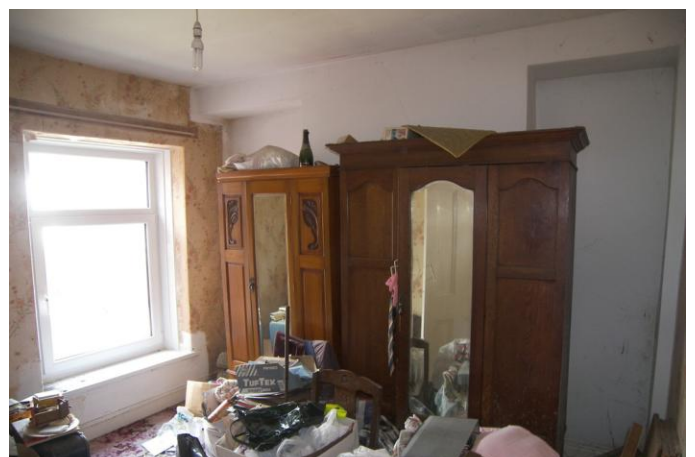
Upvc window to side, pantry area, a range of wall and floor units, Stainless steel sink and drainer.

BATHROOM

Adapted bathroom with walk in shower, low level WC and sink.

WC

First floor WC.







%epcGraph_c_1_339%

8 Gnoll Park Road
Neath
West Glamorgan
SA11 3BP

www.alisongeorge.com
enquiries@alisongeorge.com
01639 631 706

Agents Note: Whilst every care has been taken to prepare these sales particulars, they are for guidance purposes only. All measurements are approximate and are for general guidance purposes only and whilst every care has been taken to ensure their accuracy, they should not be relied upon and potential buyers are advised to recheck the measurements