



exceptional service as standard.

01494 939868

hello@kingshills.co.uk

kingshills.co.uk



24 Eden Gardens | 179 West Wycombe Road | High Wycombe | HP12 3QG

Asking Price Of | £190,000

Property Description

A superb modern attic style apartment with high vaulted ceilings and offering larger than average accommodation for a one bedroom apartment. The property is located on the west side of High Wycombe and benefits from Gas Radiator Heating and Entry Phone System. This apartment must be seen before any other one bedroom apartment to really appreciate the size of the accommodation.

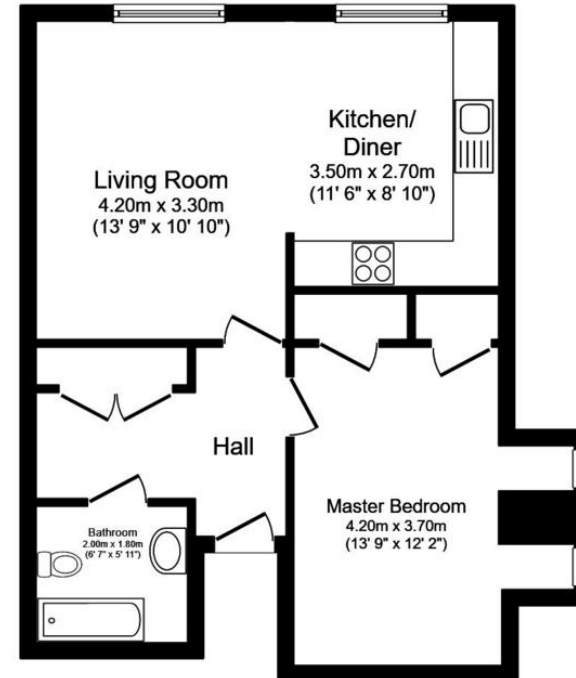
The accommodation comprises; Communal entrance hall via the security entry phone system, Spacious entrance hall for the apartment with good storage, Living Room/Kitchen that has fitted appliances, Double Bedroom with two large fitted wardrobes, modern bathroom. There is an allocated parking space to the rear of the property.

TENURE

Leasehold

EPC RATING

C



Floor Plan

Total floor area 51.0 sq. m. (549 sq. ft.) approx

This floor plan is for illustrative purposes only. It is not drawn to scale. Any measurements, floor areas (including any total floor area), openings and orientation are approximate. No details are guaranteed, they cannot be relied upon for any purpose and they do not form part of any agreement. No liability is taken for any error, omission or misstatement. A party must rely upon its own inspection(s). Plan produced for Reed Rains. Powered by www.focalagent.com

Aston Court
Kingsmead Business Park
High Wycombe
Buckinghamshire
HP11 1JU

01494 939868
hello@kingshills.co.uk
kingshills.co.uk

Agents Note: Whilst every care has been taken to prepare these particulars, they are for guidance purposes only. All measurements are for general guidance purposes only and whilst every care has been taken to ensure accuracy, they should not be relied upon and potential buyers/tenants are advised to recheck the measurements