

**wilson&co**™



**Large South facing Garden**

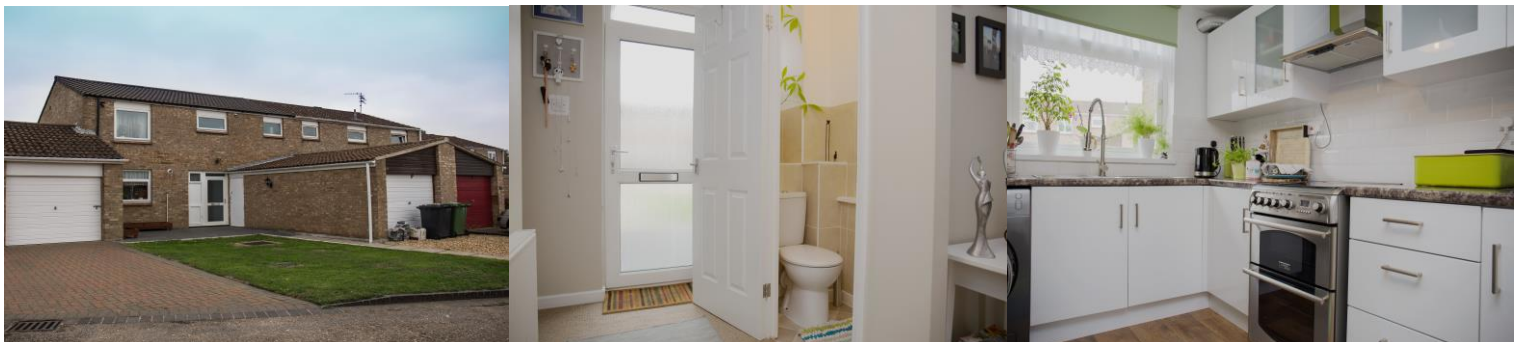
**Superb Access for local Schools**

**Recently Refurbished**

**Garage & space for 2 cars**

**3 Double Bedrooms**

**Superb Finish & Features**



**Pittneys**

Peterborough, PE4 7BA

**£180,000**

**Kitchen** 11' 2" x 8' 7" (3.40m x 2.61m)

**Lounge** 14' 4" x 11' 5" (4.37m x 3.48m)

**WC** 6' 0" x 2' 5" (1.83m x 0.74m)

**Bedroom One** 12' 8" x 9' 8" (3.86m x 2.94m)

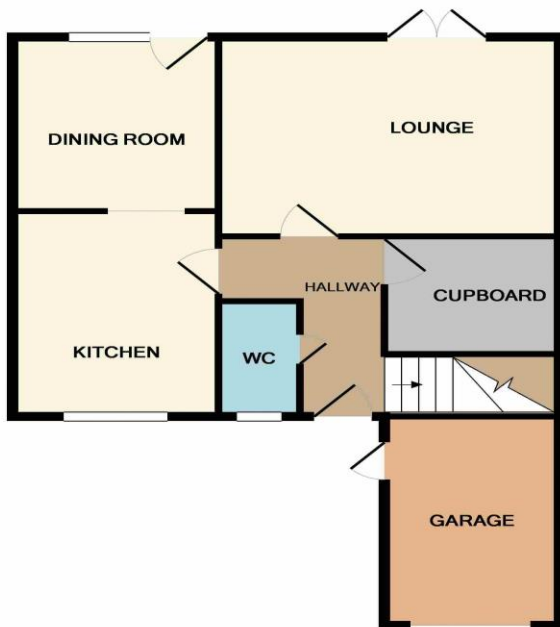
**Bedroom Two** 11' 6" x 10' 6" (3.50m x 3.20m)

**Bedroom Three** 11' 6" x 10' 6" (3.50m x 3.20m)

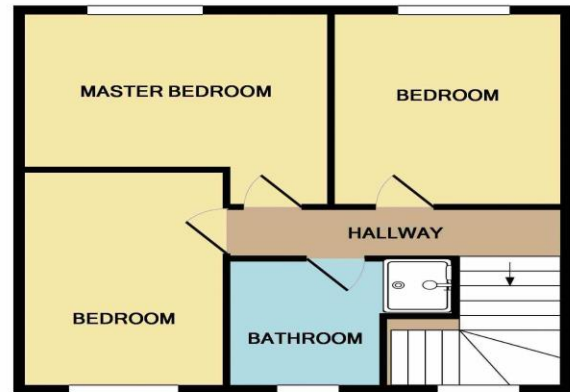
**Bathroom** 10' 6" x 2' 4" (3.20m x 0.71m)

Wilson&Co presents | Spacious living Area | No Onward Chain | 3 Bedroom Family Home | Superb Finish & Features | Superb Access for local Schools | Garage & space for 2 cars | Large south facing garden | Immaculately Presented | Recently Refurbished | 3 Double Bedrooms | Wilson & Co are proud to present this three-bedroom family home situated in Paston.

This property comprises of a kitchen/Diner, lounge, downstairs WC, three bedrooms, modern family bathroom, garden and garage with driveway. This property is close by to local schools and has great access to local routes. Viewing is highly recommended.



GROUND FLOOR  
APPROX. FLOOR  
AREA 570 SQ.FT.  
(52.9 SQ.M.)



1ST FLOOR  
APPROX. FLOOR  
AREA 484 SQ.FT.  
(45.0 SQ.M.)

TOTAL APPROX. FLOOR AREA 1054 SQ.FT. (97.9 SQ.M.)

Whilst every attempt has been made to ensure the accuracy of the floor plan contained here, measurements of doors, windows, rooms and any other items are approximate and no responsibility is taken for any error, omission, or mis-statement. This plan is for illustrative purposes only and should be used as such by any prospective purchaser. The services, systems and appliances shown have not been tested and no guarantee as to their operability or efficiency can be given  
Made with Metropix ©2018

